

VALID FROM  
01.07.22

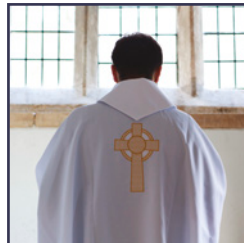


BY APPOINTMENT  
TO HER MAJESTY THE QUEEN  
CHARLES FARRIS LTD  
LONDON

# CHARLES FARRIS

CHANDLERS 1845  
LONDON

[www.charlesfarris.co.uk](http://www.charlesfarris.co.uk)



church products

PRICES CORRECT AT TIME OF PUBLICATION 01.07.22

PRICES AND PRODUCTS SUBJECT TO CHANGE  
PLEASE CHECK OUR WEBSITE FOR LATEST INFORMATION

# Contents

GLASSWARE  
BRASSWARE  
SILVER & GOLD  
WOOD AND WROUGHT IRON  
VESTMENTS  
SPECIAL PROJECTS



Charles Farris Limited  
Quarry Fields  
Mere  
Wiltshire  
BA12 6LA

Customer Service Office  
Open 9am-5pm Monday to Friday  
Telephone: 01747 861 839  
Fax: 01747 860 934  
Email: [sales@charlesfarris.co.uk](mailto:sales@charlesfarris.co.uk)

**ALL PRICES ARE CORRECT AT TIME OF GOING  
TO PRINT & INCLUDE VAT WHERE APPLICABLE**  
valid from 1st July 2022

**For new products and latest pricing  
check our website [charlesfarris.co.uk](http://charlesfarris.co.uk)**

## YOUR LOCAL CONTACTS ARE:

### **E. MIDLANDS/N. LONDON**

Elaine Freeman | **07717 571 828** | [elaine.freeman@charlesfarris.co.uk](mailto:elaine.freeman@charlesfarris.co.uk)

### **KENT**

John Hopthrow | **07803 792 273** | [john@hopthrow.com](mailto:john@hopthrow.com)

### **SOUTH & WEST/S. LONDON**

John McNulty | **07810 184 840** | [john.mculty@charlesfarris.co.uk](mailto:john.mculty@charlesfarris.co.uk)

### **MIDLANDS & S. WALES**

Lisa Robinson | **07469 855025** | [lisa.robinson@charlesfarris.co.uk](mailto:lisa.robinson@charlesfarris.co.uk)

### **NORTH WEST & N. EAST/N. WALES**

Paul Briers | **07881 302712** | [paul.briers@charlesfarris.co.uk](mailto:paul.briers@charlesfarris.co.uk)

### **SCOTLAND & N.E. ENGLAND**

Kevin Marshall | **07786 740047** | [kevin.marshall@charlesfarris.co.uk](mailto:kevin.marshall@charlesfarris.co.uk)

## PLEASE NOTE

Packing, handling and delivery charges currently subject to a £3 fuel surcharge for orders over £130 net.

Next Day and before 12 noon services are available at additional cost.

A carrier surcharge may also be levied for outlying areas at cost for small lightweight posted orders, charges may be reduced variations in delivery costs will be advised at time of order.

Normal terms and conditions apply  
All major credit cards accepted







CHARLES FARRIS  
CHANDLERS 1845  
LONDON

CRUETS, LAVABO JUGS & BOWLS  
PEGGED SANCTUARY GLASS  
VOTUM GLASSES  
SANCTUARY GLASSES

---

The selection of glass items available from Charles Farris Limited ranges from the inexpensive moulded glass to hand blown, full lead crystal.



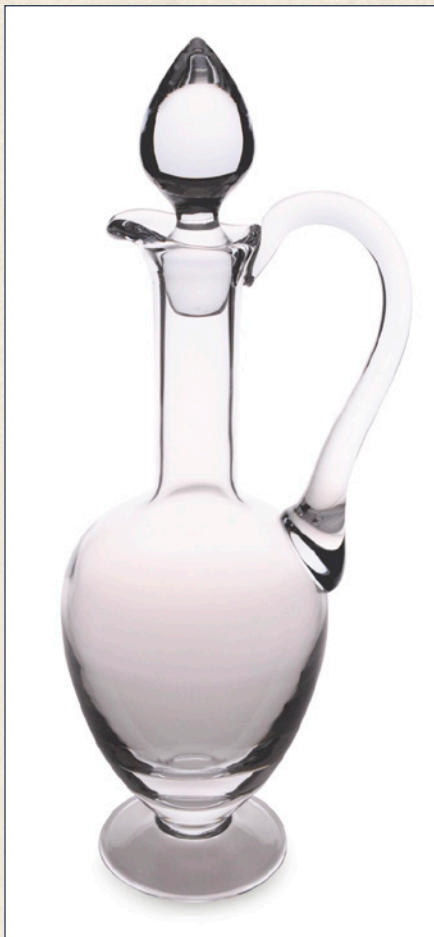
GLASSWARE



## CRUETS, LAVABO JUGS & BOWLS

**TRAY** to accompany item **AS 3010**. 9" long x 7" wide. Pack of 1

|       |        |
|-------|--------|
| Code  | AS1460 |
| Price | £38.69 |



**LARGE FLAGON**, plain glass 75cl (25 fl oz). Height: 12" including stopper. Pack of 1

|       |        |
|-------|--------|
| Code  | GLF01  |
| Price | £99.29 |

**CRYSTAL GLASS CRUET SET** 12.5cl. (4fl oz). Pack of 2



|       |        |
|-------|--------|
| Code  | AS3010 |
| Price | £52.33 |

**LAVABO JUG** plain glass. Height: 4½". Pack of 1



|       |        |
|-------|--------|
| Code  | GLJ01  |
| Price | £24.87 |

**LAVABO BOWL, PLAIN GLASS**  
Diameter: 5". Pack of 1

|       |        |
|-------|--------|
| Code  | GLB02  |
| Price | £24.87 |







**PLAIN GLASS CRUET**

23cl. (8 fl oz). Height: 6½"  
including stopper. Pack size 1

|       |        |
|-------|--------|
| Code  | CR02   |
| Price | £55.25 |



**CRUET WITH GLASS  
STOPPER**

50 cl  
(17 fl oz). Height: 12"  
including stopper. Pack size 1

|       |        |
|-------|--------|
| Code  | CR05   |
| Price | £77.14 |

**BELL SHAPED GLASS CRUET** 19cl (8 fl oz).  
Height: 8" including stopper. Pack size 1



|       |        |
|-------|--------|
| Code  | CR08   |
| Price | £47.92 |



## SANCTUARY GLASS

### BRASS VOTUM GLASS HOLDER COMPLETE WITH GLASS

For use with Farris Votum Glasses, Height: 4 1/2", Diameter: 3 1/2"

|       |        |
|-------|--------|
| Code  | VH01   |
| Price | £91.72 |



### FOR USE WITH LALOR ANGELA 7 DAY LIGHTS Size 6 1/4" x 3"

|       |        |
|-------|--------|
| Code  | LE8000 |
| Price | £41.34 |



### HEAT RETENTION

**CAP** for 8-9 day vegetable wax sanctuary lights. Fit this heat retention cap in the autumn and remove it in the spring

|       |        |
|-------|--------|
| Code  | HRC01  |
| Price | £41.98 |



**PEGGED SANCTUARY GLASS** – 3 1/2" wide at mouth, depth 4" including peg. For use with floating wick (FW 12) and vegetable oil only. Pack size 1

|       |        |
|-------|--------|
| Code  | PSG01C |
| Price | £58.74 |

|       |        |
|-------|--------|
| Code  | PSG01B |
| Price | £58.74 |

|       |        |
|-------|--------|
| Code  | PSG01R |
| Price | £58.74 |



**VOTUM GLASSES** – For use with 13hr or 18 hr uncased candles. Height: 2 1/2" x Diameter: 2 1/4". Pack size 1 or set of 4.

|       |        |        |
|-------|--------|--------|
| Code  | VG01   | VG014C |
| Qty   | Single | 4 pack |
| Price | £10.09 | £35.47 |

|       |        |        |
|-------|--------|--------|
| Code  | VG03   | VG014B |
| Qty   | Single | 4 pack |
| Price | £10.09 | £35.47 |

|       |        |        |
|-------|--------|--------|
| Code  | VG02   | VG014R |
| Qty   | Single | 4 pack |
| Price | £10.09 | £35.47 |



**FOR USE WITH ST PATRICK 8/9 DAY SANCTUARY CANDLES** Size 7 1/2" x 3". Pack size 1

|       |        |
|-------|--------|
| Code  | VG024  |
| Price | £36.36 |

|       |        |
|-------|--------|
| Code  | VG044  |
| Price | £36.36 |

|       |        |
|-------|--------|
| Code  | VG034  |
| Price | £36.36 |





CHARLES FARRIS  
CHANDLERS 1845  
LONDON

CANDLESTICKS  
SOCKETS  
ACOLYTE TORCHES  
WATER SPRINKLERS  
HOLY WATER BUCKETS  
EXTINGUISHERS  
THURIBLES  
HANGING LAMP  
CROSSES  
INCENSE BURNERS & BOATS

We offer an extensive range of brass products which have been crafted with the utmost care and attention.



BRASSWARE & BRONZE



Candlesticks



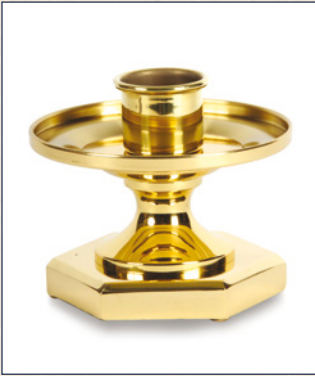
Candlestick

| Code   | BF01    | BF02    |
|--------|---------|---------|
| Price  | £109.45 | £140.03 |
| Socket | 2"      | 3"      |
| Dia.   | 6"      | 7 1/4"  |
| Height | 3"      | 5"      |



Brass Bowl Shaped Candlestick with 2" Socket

| Code  | BF03    |
|-------|---------|
| Price | £102.99 |



Candlestick 1 1/4 inch socket. Hexagonal base

| Code   | LA35508 | LA355022 |
|--------|---------|----------|
| Price  | £171.86 | £204.47  |
| Height | 3"      | 9"       |



4" Brass Candlestick with 1 1/2" Socket

| Code  | BC03200 |
|-------|---------|
| Price | £98.45  |



6" Brass Candlestick with 1 1/2" Socket

| Code  | BC03210 |
|-------|---------|
| Price | £110.26 |



9" Brass Candlestick with 1 1/2" Socket

| Code  | BC03220 |
|-------|---------|
| Price | £122.08 |



12" Brass Candlestick with 1 1/2" Socket

| Code  | BC03230 |
|-------|---------|
| Price | £137.82 |



Brass Classic Candlestick 18" High with 1 1/4" socket

| Code  | BCC02    |
|-------|----------|
| Price | £1603.01 |



Brass Paschal Candlestick With 3" socket

| Code   | BWPC01   | BWPC02   |
|--------|----------|----------|
| Price  | £2471.04 | £2882.82 |
| Height | 39"      | 54"      |



40" Brass Candlestick Tall with weighted base. 7/8" socket

| Code  | BC40    |
|-------|---------|
| Price | £453.84 |



## SOCKETS, CROSSES & EXTINGUISHERS



**PLAIN BRASS  
SOCKETS**



| Code   | PCS1   | PCS11/2 | PCS2   | PCS3    |
|--------|--------|---------|--------|---------|
| Height | 2"     | 2"      | 2"     | 3"      |
| Width  | 1"     | 1½"     | 2"     | 3"      |
| Price  | £38.30 | £41.50  | £59.96 | £115.14 |

### LIPPED CANDLE SOCKETS

All brass with screw hole in base most sizes available to order, stock.

| Code   | CS7/8  | CS1    | CS11/4 | CS13/8 | CS11/2 | CS13/4 | CS2    | CS21/4 | CS21/2 | CS23/4 | CS3    |
|--------|--------|--------|--------|--------|--------|--------|--------|--------|--------|--------|--------|
| Height | 1"     | 1"     | 1¼"    | 1⅜"    | 1½"    | 1¾"    | 2"     | 2¼"    | 2½"    | 2¾"    | 3"     |
| Width  | 7/8"   | 1"     | 1¼"    | 1⅜"    | 1½"    | 1¾"    | 2"     | 2¼"    | 2½"    | 2¾"    | 3"     |
| Price  | £20.46 | £23.40 | £27.06 | £31.56 | £36.14 | £41.77 | £57.74 | £59.21 | £57.55 | £79.79 | £91.40 |

**CANDLE  
SOCKETS**  
Lipped and  
silver plated.



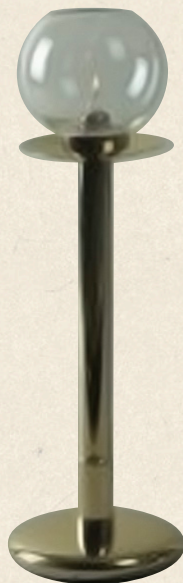
| Code   | CS1SP  | CS2SP  |
|--------|--------|--------|
| Height | 1½"    | 2"     |
| Width  | 1"     | 2"     |
| Price  | £43.50 | £78.83 |

## ACOLYTE TORCHES & LAMPS



**ACOLYTE  
TORCH & BASE**  
with 7/8" Socket.  
Height: 40"

| Code  | AT01    |
|-------|---------|
| Price | £450.65 |



**SPRING LOADED  
CANDLESTICK** with base  
for use as an acolyte. For use  
with SP 06 candles

| Code   | SLA20   | SLA27   |
|--------|---------|---------|
| Price  | £220.28 | £259.78 |
| Height | 20"     | 27"     |

**REPLACEMENT GLASS**  
to go with products SLA 20  
and SLA 27

| Code  | AG01   |
|-------|--------|
| Price | £67.51 |



**PROCESSIONAL  
ACOLYTE TORCH** with  
Perspex flame protector and  
for use with spring loaded  
candles (SP 06). Overall  
height 40". To go with base  
LT 8331 (not included).

| Code  | LT8330  |
|-------|---------|
| Price | £211.17 |

**BRASS BASE** for  
Acolyte torches LT8330

| Code  | LT8331  |
|-------|---------|
| Price | £107.05 |



**PROCESSIONAL  
LANTERN** hinged  
to stay upright with  
overall height 64",  
with mahogany pole  
including brass base

| Code  | LD3250  |
|-------|---------|
| Price | £478.45 |



## WATER SPRINKLERS, HOLY WATER BUCKETS AND CANDLE EXTINGUISHERS



**ASPERGES BRUSH** Brass handle

|              |              |
|--------------|--------------|
| <b>Code</b>  | <b>ASB01</b> |
| <b>Price</b> | £155.38      |



**WATER SPRINKLER** with wooden handle. Length: 11"

|               |                |                |
|---------------|----------------|----------------|
| <b>Code</b>   | <b>GW2234G</b> | <b>GW2234S</b> |
| <b>Colour</b> | Brass          | Silver         |
| <b>Price</b>  | £70.80         | £70.80         |



**POCKET HOLY WATER SPRINKLER** with a protective case. Length: 4¾"

|               |               |              |
|---------------|---------------|--------------|
| <b>Code</b>   | <b>HWS01</b>  | <b>HWS02</b> |
| <b>Colour</b> | Silver plated | Gilded       |
| <b>Price</b>  | £112.45       | £142.93      |



**HOLY WATER BUCKET** Height: 7"  
Diameter: 7"

|              |                |                |
|--------------|----------------|----------------|
| <b>Code</b>  | <b>GW9121B</b> | <b>GW9121N</b> |
| <b>Metal</b> | Brass          | Nickel         |
| <b>Price</b> | £207.65        | £207.65        |



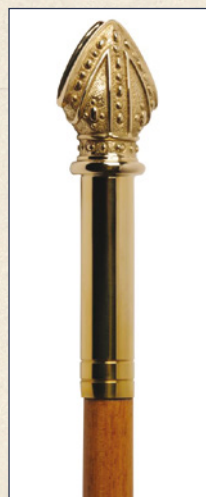
**BRASS WATER SPRINKLER** Free standing. Height: 9¼", diameter: 2"

|              |             |
|--------------|-------------|
| <b>Code</b>  | <b>WS01</b> |
| <b>Price</b> | £257.79     |



**EXTINGUISHER WITH TAPER HOLDER** 3ft pole

|              |              |              |
|--------------|--------------|--------------|
| <b>Code</b>  | <b>EX01A</b> | <b>EX01B</b> |
| <b>Up to</b> | 3" candles   | 2" candles   |
| <b>Price</b> | £216.09      | £220.78      |



**BRASS WARDENS STAVE WITH MITRE & WOODEN POLE**  
Approx 55" incl. pole

|              |                |
|--------------|----------------|
| <b>Code</b>  | <b>BWA480M</b> |
| <b>Price</b> | £316.74        |



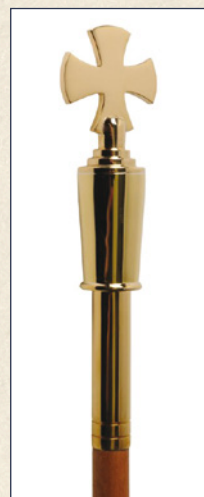
**BRASS WARDENS STAVE WITH CROWN & WOODEN POLE**  
Approx 55" incl. pole

|              |                |
|--------------|----------------|
| <b>Code</b>  | <b>BWA480C</b> |
| <b>Price</b> | £316.74        |



**BRASS STAVE WITH CROSS ON ORB ON WOODEN POLE**  
Approx 55" incl. pole

|              |               |
|--------------|---------------|
| <b>Code</b>  | <b>BWA482</b> |
| <b>Price</b> | £448.72       |



**BRASS PROCESSIONAL CROSS ON TAPERED STEM ON WOODEN POLE**  
Approx 55" incl. pole

|              |               |
|--------------|---------------|
| <b>Code</b>  | <b>BWA481</b> |
| <b>Price</b> | £475.10       |

**WINE RED BARRIER ROPE WITH BRASS HOOKS** Other colours and lengths available. Measure wall to wall and the rope is made to include the span

|              |              |
|--------------|--------------|
| <b>Code</b>  | <b>PRB01</b> |
| <b>Price</b> | £66.74       |



**BRASS EYES FOR ROPE** Pack single pair

|              |                |
|--------------|----------------|
| <b>Code</b>  | <b>PRB01EP</b> |
| <b>Price</b> | £14.63         |

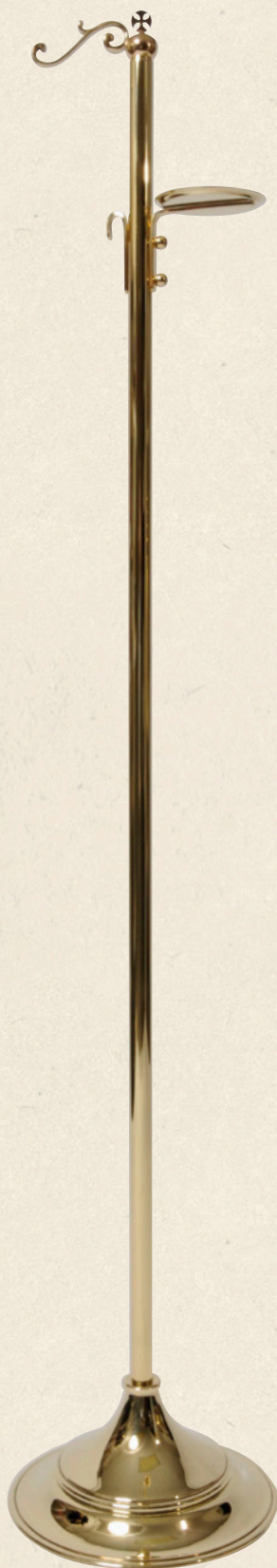


**BRASS CLIP & SHOE FOR WARDENS WAND**  
Pack size 1

|              |                |
|--------------|----------------|
| <b>Code</b>  | <b>BWWCS01</b> |
| <b>Price</b> | £190.08        |



# THURIBLES & STANDS



**THURIBLE STAND** with boat shelf. Height: 55"

|       |         |
|-------|---------|
| Code  | BT02    |
| Price | £653.40 |

**CROSS DESIGN THURIBLE**  
Height: 7½"  
Diameter: 4½"



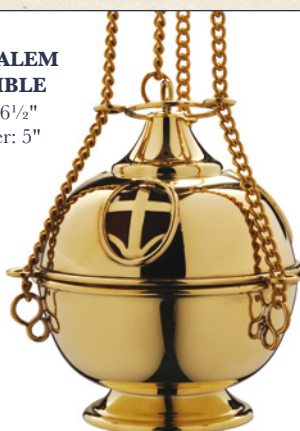
|       |         |
|-------|---------|
| Code  | BT03    |
| Price | £700.42 |

**SMALL TRADITIONAL THURIBLE**  
Height: 6½"  
Diameter: 4"



|       |         |
|-------|---------|
| Code  | BT05    |
| Price | £347.16 |

**JERUSALEM THURIBLE**  
Height: 6½"  
Diameter: 5"



|       |           |
|-------|-----------|
| Code  | SBOET102F |
| Price | £546.48   |

**SINGLE CHAIN THURIBLE**  
Height: 9" Diameter: 5"



|       |         |
|-------|---------|
| Code  | BT08    |
| Price | £503.20 |

**STAINLESS STEEL THURIBLE**  
Height: 7" Diameter: 4½" with 3 chains



|       |         |
|-------|---------|
| Code  | CX0840  |
| Price | £339.77 |

**REPLACEMENT BRASS GRILLE** for PIB01 & 02



|       |             |             |
|-------|-------------|-------------|
| Code  | PIBGRILLE01 | PIBGRILLE02 |
| Price | £1.94       | £1.94       |

**PERSONAL ADJUSTABLE INCENSE BURNER**  
Height: 11cm Fully extendable



|       |        |
|-------|--------|
| Code  | PIB01  |
| Price | £19.94 |

**PERSONAL ADJUSTABLE INCENSE BURNER NICKEL**  
Height: 11cm Fully extendable



|       |        |
|-------|--------|
| Code  | PIB02  |
| Price | £19.94 |





**BRASS ACOLYTE TORCH & BASE** with  $\frac{7}{8}$ " Socket. Height: 28"

|       |         |
|-------|---------|
| Code  | BAT01   |
| Price | £450.65 |

**WALL MOUNTED LAMP** For Septalite Glass. Your choice of red, clear or blue glass included. Length from wall: 13"



|       |         |
|-------|---------|
| Code  | BS02    |
| Price | £516.72 |

**HANGING LAMP WITH 3 CHAINS**

For use with Farris Septalite Glass Your choice of red, clear or blue glass included. Diameter: 11½"



|       |         |
|-------|---------|
| Code  | BL01    |
| Price | £656.18 |



**STANDING CROSS WITHOUT CORPUS**  
Height: 26"

|       |          |
|-------|----------|
| Code  | BT06     |
| Price | £1013.76 |



**BRASS ALTAR CROSS** with silver Corpus. Height: 15"

|       |          |
|-------|----------|
| Code  | KA109037 |
| Price | £473.99  |



**BRASS PRIESTS CROSS** with silver Corpus. Length: 10"

|       |         |
|-------|---------|
| Code  | KA2077  |
| Price | £253.44 |



**GOLD PLATED INCENSE BOAT SPOON**

|       |        |
|-------|--------|
| Code  | CX0814 |
| Price | £34.78 |

**INCENSE BOAT** inc 5" Spoon. Height: 5" Diameter: 4"



|       |         |
|-------|---------|
| Code  | CX0826  |
| Price | £171.45 |

**PERSONAL INCENSE BURNER**  
Brass. Height: 2½" Diameter: 2½"



|       |         |
|-------|---------|
| Code  | BB03    |
| Price | £303.49 |

**INCENSE BOAT** inc 4" Spoon. Height: 2½" Diameter: 4½"



|       |         |
|-------|---------|
| Code  | IBT01   |
| Price | £146.07 |





CHARLES FARRIS  
CHANDLERS 1845  
LONDON

CHALICES  
CIBORIA  
PYX  
PATENS / WAFER BOXES  
BAPTISMAL SHELLS  
CANDLESTICKS  
FLAGONS, LAVABO JUGS,  
BOWLS & CRUETS  
HOLY OIL STOCKS  
SILVERWARE ACCESSORIES



SILVER & GOLD



# CHALICES, CIBORIUM & PATENS

Silverware supplied by Charles Farris Ltd is all made by skilled craftsmen to the highest standards. The Silverware featured is available in hallmarked Sterling Silver or Silver plate. All Chalices and Ciboria have a 22ct goldplated bowl. Each item is supplied with a complimentary draw-string protective bag. **PLEASE CHECK THE CURRENT PRICE OF STERLING SILVER ITEMS BEFORE ORDERING.**

## SAINT AUGUSTINE CHALICE

Height: 8" Capacity: 12fl oz. 22ct gold plated interior, with an intricately detailed knob with rope design on the stem and base.

| Code  | SSC107          | SPC107       |
|-------|-----------------|--------------|
| Price | £2315.94        | £812.22      |
| Type  | Sterling silver | Silver plate |



## SILVER PLATED CHALICE

with celtic knot design. 8" x 4½" dia bowl



| Code  | SPCC010 |
|-------|---------|
| Price | £405.28 |

## SILVER PLATED CHALICE

Height: 6¾" Capacity: 12fl oz



| Code  | SPC12   |
|-------|---------|
| Price | £278.72 |

## SILVER PLATED CHALICE

Height: 6¾" Capacity: 11fl oz



| Code  | SPP11   |
|-------|---------|
| Price | £278.72 |

## ST MARK CHALICE

Height: 7½" Capacity: 12fl oz



| Code  | SSC202          | SPC202       |
|-------|-----------------|--------------|
| Price | £1974.36        | £976.50      |
| Type  | Sterling silver | Silver plate |

## ST LUKE CHALICE

Height: 6¾". Capacity: 12fl oz



| Code  | SSC103          | SPC103       |
|-------|-----------------|--------------|
| Price | £2126.82        | £629.97      |
| Type  | Sterling silver | Silver plate |

## ST PATRICK CHALICE

Height: 7½". Capacity: 12fl oz



| Code  | SSC200          | SPC200       |
|-------|-----------------|--------------|
| Price | £2461.14        | £1391.46     |
| Type  | Sterling silver | Silver plate |

## ST MATTHEW CHALICE

Height: 6½". Capacity: 9½fl oz



| Code  | SSC201          | SPC201       |
|-------|-----------------|--------------|
| Price | £2471.04        | £1468.56     |
| Type  | Sterling silver | Silver plate |



## PYX, PATENS & WAFER BOXES

### TRINITY CIBORIUM

Height: 8½"  
Capacity:  
300 wafers



|       |                 |              |
|-------|-----------------|--------------|
| Code  | SSW105          | SPW105       |
| Price | £1821.90        | £812.68      |
| Type  | Sterling silver | Silver plate |

### ST LUKE CIBORIUM

Height: 8½"  
Capacity:  
300 wafers



|       |                 |              |
|-------|-----------------|--------------|
| Code  | SSW103          | SPW103       |
| Price | £2279.28        | £648.12      |
| Type  | Sterling silver | Silver plate |

### ST AUGUSTINE CIBORIUM

Height: 10".  
Capacity:  
250 wafers



|       |                 |              |
|-------|-----------------|--------------|
| Code  | SSW107          | SPW107       |
| Price | £1974.36        | £1140.39     |
| Type  | Sterling silver | Silver plate |

### TRINITY CIBORIUM

with celtic  
knop design  
& celtic cross  
on lid. Height:  
9½" tall to  
top of cross.  
Capacity: 200  
wafers



|       |         |
|-------|---------|
| Code  | SPCC015 |
| Price | £501.83 |

### PEWTER CIBORIUM

Height: 6". Diameter: 5"



|       |          |
|-------|----------|
| Code  | POEC022F |
| Price | £97.68   |

### GOLD PLATED WAFER BOX

Height: 1¾". Diameter: 4"



|       |         |
|-------|---------|
| Code  | CX0820  |
| Price | £230.87 |

### HOSPITAL HINGED PYX

Silver plated and gilded with cross. Dia: 2", Cap: 10 wafers



|       |          |
|-------|----------|
| Code  | SPGP012F |
| Price | £145.20  |

### CIRCULAR WAFER BOX

S/P Gilded Diameter: 4½"  
Holds 45 wafers



|       |         |
|-------|---------|
| Code  | SW1690  |
| Price | £328.70 |

### RECTANGULAR WAFER BOX

SILVER PLATED Capacity: 50 wafers.  
4" x 2½"



### SILVER PLATED SQUARE WAFER BOX

Capacity: 100 wafers. 4" x 4"



|       |           |            |
|-------|-----------|------------|
| Code  | SWA394-50 | SWA395-100 |
| Price | £637.85   | £792.00    |
| Shape | Oblong    | Square     |



### HINGED PYX

Silver plated and gilded with engraved cross. Dia: 1¾", Cap: 10 wafers

|       |         |
|-------|---------|
| Code  | SW15H   |
| Price | £114.04 |



### PEWTER PYX

Dia: 1¾", with PX.

|       |        |
|-------|--------|
| Code  | PP001F |
| Price | £42.90 |



### ROUND HINGED PYX

Silver plated with engraved cross. Dia: 1¾", Cap: 10 wafers

|       |         |
|-------|---------|
| Code  | SW14    |
| Price | £129.14 |



**TRINITY CHALICE** Height: 6¾",  
Capacity: 12fl oz



|       |                 |              |
|-------|-----------------|--------------|
| Code  | SSC105          | SPC105       |
| Price | £1974.36        | £566.08      |
| Type  | Sterling silver | Silver plate |

**PEWTER RUTLAND CHALICE**  
Height 6" x 4" dia



|       |         |
|-------|---------|
| Code  | POEC020 |
| Price | £109.95 |

**WELL PATEN** Silver  
plated (gilded if required)



|       |         |         |
|-------|---------|---------|
| Code  | PAT01   | PAT02   |
| Price | £132.64 | £159.16 |
| Size  | 5"      | 6"      |

**GOLD PLATED WELL PATEN**  
with cross on the rim



|       |         |
|-------|---------|
| Code  | PAT07   |
| Price | £147.88 |

**GOLD PLATED PATEN** with cross  
design. Diameter 6"



|       |         |
|-------|---------|
| Code  | SPCP010 |
| Price | £181.50 |

**GOLD PLATED PATEN**  
with cross design on the lid.  
4½" diameter



|       |         |
|-------|---------|
| Code  | CX0414  |
| Price | £217.39 |

**WELL PATEN** Silver  
plated and gilded.  
Diameter 6"



|       |          |
|-------|----------|
| Code  | SPOEP003 |
| Price | £159.17  |

**5" WELL PATEN PEWTER**



|       |          |
|-------|----------|
| Code  | PPOEP010 |
| Price | £46.96   |

**TWO HANDLED PATEN** Silver plated.  
Overall length: 11"  
Diameter: 6¼"



|       |         |
|-------|---------|
| Code  | PAT05   |
| Price | £157.72 |

**DEEP PATEN** Silver plated. Diameter 6"  
Holds 300 wafers



|       |         |
|-------|---------|
| Code  | SPP13   |
| Price | £268.62 |

**SILVER PLATED OPEN  
CIBORIUM** Height: 5½" with cross  
on lip. Holds 300 wafers.



|       |         |
|-------|---------|
| Code  | SWA461  |
| Price | £296.74 |

**GOLD PLATED OPEN CIBORIUM**  
Diameter 6"



|       |         |
|-------|---------|
| Code  | CX0411  |
| Price | £227.16 |



# HOLY OIL STOCKS



**HOLY OIL STOCK SET** Silver plated and gilded inside interlocking in carry pouch engraved 'I B C' Height: 2"

|       |         |
|-------|---------|
| Code  | OS04    |
| Price | £183.37 |

**HOLY OIL STOCK SET** Silver Plated Double Engraved with I.B (Including case). Height 1"



|       |         |
|-------|---------|
| Code  | OS06    |
| Price | £175.09 |

**DOUBLE HOLY OIL STOCK** Gilded, engraved 'I B' traditional case, Diameter: 1". Height: 1"



|       |         |
|-------|---------|
| Code  | OS06G   |
| Price | £211.30 |

**RESERVATION TRIPLE ENGRAVED WITH I,B,C** (Including case) Silver plated traditional case, engraved 'I B C' Diameter: 1" Height: 2"



|       |         |
|-------|---------|
| Code  | OS10    |
| Price | £376.51 |

**TRIPLE HOLY OIL STOCK SET** Silver plated, traditional case, engraved 'I B C' Diameter: 1" Height: 1"



|       |         |
|-------|---------|
| Code  | OS11    |
| Price | £218.17 |



**SINGLE HOLY OIL STOCK** Gilded, engraved 'I', traditional case. Diameter: 1". Height 1"

|       |         |
|-------|---------|
| Code  | OS05    |
| Price | £119.77 |



**SINGLE HOLY OIL STOCK** Silver plated, traditional case Diameter: 1" Height: 1"

|       |         |
|-------|---------|
| Code  | OS07    |
| Price | £130.63 |

**SINGLE HOLY OIL STOCK** with ring, Gilded, traditional case, engraved 'I', Diameter: 1" Height: 1"

|       |         |
|-------|---------|
| Code  | OS08    |
| Price | £136.68 |



**SINGLE HOLY OIL STOCK** with ring, silver plated traditional case, engraved 'I' Diameter: 1" Height: 1"

|       |         |
|-------|---------|
| Code  | OS09    |
| Price | £121.70 |



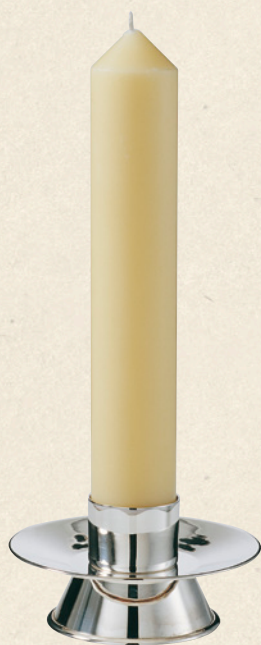
**HOLY OIL STOCK** Silver plated and gilded inside interlocking in traditional case engraved 'I B C' Height: 2"



|       |         |
|-------|---------|
| Code  | OS12    |
| Price | £197.10 |



## MISCELLANEOUS



**SILVER PLATED CANDLESTICK**

| Code   | SC01    | SC02    |
|--------|---------|---------|
| Price  | £181.06 | £238.38 |
| Height | 3"      | 5"      |
| Dia.   | 6"      | 7¾"     |
| Socket | 2"      | 3"      |



**2 PAIRS OF WHITE GLOVES**  
For protection of metal items when handling. Size medium.

| Code  | GLOVE01 |
|-------|---------|
| Price | £4.02   |



**SILVER PLATED OLD ENGLISH CRUET/LAVABO JUG** Height: 4½" Capacity: 7fl oz

| Code  | SPOEC035F |
|-------|-----------|
| Price | £178.20   |

**SILVER PLATED OLD ENGLISH LAVABO BOWL** Diameter: 4½"

| Code  | SPOEL002F |
|-------|-----------|
| Price | £138.60   |



**BAPTISMAL SHELL**  
Silver Plated  
Diameter: 3½"

| Code  | SBS01   |
|-------|---------|
| Price | £159.69 |

**STAINLESS STEEL LAVABO**  
Height: 4½"



| Code  | CX0818 |
|-------|--------|
| Price | £95.95 |



**SILVER PLATED GEORGIAN CRUET JUG**  
**SMALL** Height: 3¼" Capacity: 4fl oz

| Code   | SPGC031F | SPGC030F |
|--------|----------|----------|
| Price  | £138.60  | £125.40  |
| Gilded | Yes      | No       |

**SILVER PLATED GEORGIAN CRUET JUG** with hinged lid



| Code  | SPGC032F | SPGC033F |
|-------|----------|----------|
| Price | £257.40  | £283.80  |
| Size  | Small    | Medium   |

**SILVER PLATED OPEN CIBORIA**

4" high 6" diameter  
250 wafers

6½" diameter  
with plain foot



| Code  | SPGP023F | SPOEP021F |
|-------|----------|-----------|
| Price | £323.40  | £257.40   |
| Style | Pattern  | Plain     |

**BLUE FELT DRAW STRING BAG**  
for a Pyx. 4" wide x 4½" deep



| Code  | DSB01 |
|-------|-------|
| Price | £7.73 |

**BLUE FELT DRAW STRING BAG** for a Paten. 6" wide x 5½" deep



| Code  | DSB02 |
|-------|-------|
| Price | £9.04 |

**BLUE FELT DRAW STRING BAG**  
for a chalice. 9" wide x 11½" deep



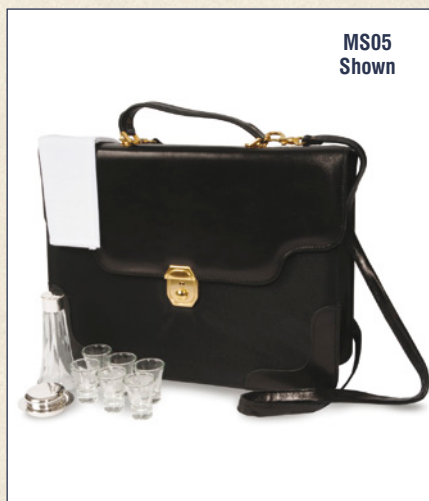
| Code  | DSB03  |
|-------|--------|
| Price | £11.19 |





**8 PIECE SET IN CASE WITH GLASS CRUET** Contains 6 glass communion glasses, glass cruet and wafer box with lid

|       |         |
|-------|---------|
| Code  | MS08B   |
| Price | £356.95 |



MS05  
Shown

**HOME COMMUNION SET** shoulder bag 8" x 8", 4-piece with glass or metal cruet, complete with purificators, silver plated

|       |         |         |
|-------|---------|---------|
| Code  | MS05    | MS05M   |
| Price | £458.17 | £458.17 |
| Cruet | Glass   | Metal   |



**HOME COMMUNION SET** Pewter, zipped case, 6½" x 9", 8-piece, 6 cups, cruet, bread paten with lid, stole compartment

|       |         |
|-------|---------|
| Code  | MSP08   |
| Price | £305.42 |



**GEORGIAN 9 PIECE SET** Silver plated with crystal cruet, no corpus – can be supplied with corpus (sterling silver on request)

|       |         |
|-------|---------|
| Code  | SCGS020 |
| Price | £961.95 |



**4 PIECE PEWTER HOME COMMUNION SET** with case. Chalice, hinged pyx with cross design, cruet, well paten with cross design

|       |           |
|-------|-----------|
| Code  | PSC0ES004 |
| Price | £192.10   |



**CROSS HOME COMMUNION PURIFICATOR** 6" x 10" either with a red or white cross

|       |         |         |
|-------|---------|---------|
| Code  | AL03HCW | AL03HCR |
| Price | £9.07   | £9.07   |
| Cross | White   | Red     |



## HOME COMMUNION



**HOME COMMUNION SET** 4 piece silver plated Rutland communion set. With traditional case

|       |         |
|-------|---------|
| Code  | SCRS004 |
| Price | £434.28 |



**GEORGIAN HOME COMMUNION SET** 4 piece silver plated, including purificators

|       |         |
|-------|---------|
| Code  | SCGS006 |
| Price | £590.68 |



**STOLE**, for home communion use, Length 48", width 2" white/purple, satin finish

|       |         |
|-------|---------|
| Code  | HCS01   |
| Price | £108.24 |



**SILVER PLATED GEORGIAN SICK CALL CHALICE**

3<sup>3</sup>/<sub>8</sub>" tall 1<sup>7</sup>/<sub>8</sub>" top diameter

|       |         |
|-------|---------|
| Code  | SCGC001 |
| Price | £120.64 |



**SILVER PLATED CRUCIFIX** 4<sup>1</sup>/<sub>4</sub>" tall

|       |          |
|-------|----------|
| Code  | SCOEC055 |
| Price | £154.49  |

**SILVER PLATED CANDLE STICK** 2" tall

|       |          |
|-------|----------|
| Code  | SCOEC060 |
| Price | £76.83   |



**SILVER PLATED CRUCIFIX GEORGIAN SICK CALL PATEN** 3<sup>1</sup>/<sub>4</sub>" wide

|       |         |
|-------|---------|
| Code  | SCGP002 |
| Price | £63.36  |



**SILVER PLATED HINGED HOSPITAL PYX DIA** 2<sup>3</sup>/<sub>4</sub>" diameter

|       |         |
|-------|---------|
| Code  | SWA470H |
| Price | £296.73 |



**PLAIN SILVER TOPPED HOME COMMUNION CRUET** 4<sup>1</sup>/<sub>4</sub>" high

|       |        |
|-------|--------|
| Code  | HCCR1  |
| Price | £72.21 |

**BULBOUS SILVER TOPPED HOME COMMUNION CRUET** 4<sup>1</sup>/<sub>2</sub>" high

|       |         |
|-------|---------|
| Code  | HCCR2   |
| Price | £135.98 |







CHARLES FARRIS  
CHANDLERS 1845  
LONDON

CANDLESTICKS

OFFERTORY BOX

HYMN BOARD & NUMBERS

CROSSES

LECTERNS & BIBLE STANDS

The size of the Charles Farris Ltd wooden furniture featured, can be adjusted to meet your specific requirements. Items shown are made from (fully sustainable) seasoned ash, they can also be produced in oak



WOOD & WROUGHT IRON

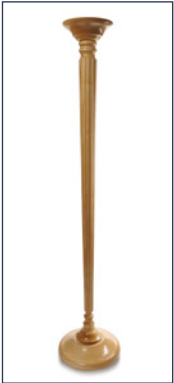


Candlesticks & Offertory Box



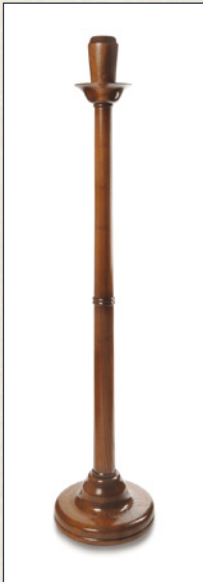
**SMALL FLUTED ASH CANDLESTICK**  
Available with 1 1/2" or 2" diameter brass socket.  
Stained in mahogany, ash or oak colours

| Code   | WC01M    | WC01    | WC010   |
|--------|----------|---------|---------|
| Price  | £212.23  | £212.23 | £212.23 |
| Colour | Mahogany | Ash     | Oak     |



| Code   | WC02    | WF506   | WC04    |
|--------|---------|---------|---------|
| Price  | £342.17 | £735.85 | £674.72 |
| Height | 24"     | 48"     | 58"     |

**ASH FLUTED PASCHAL CANDLESTICK**  
with brass socket of choice



**ASH COLUMN DESIGN PASCHAL CANDLESTICK** 55" for use with 2" candle

| Code  | WC05    | WC05A   |
|-------|---------|---------|
| Price | £708.03 | £708.03 |
| Stain | Dark    | Ash     |



| Code   | B001T   | B001TN  |
|--------|---------|---------|
| Price  | £111.40 | £111.40 |
| Colour | Dark    | Light   |

**WOODEN OFFERTORY BOX**  
**NATURAL WOOD**, (from fair trade source). 12" long x 8" deep x 9" high with etched cross with lock



**WOODEN WAFER BOX** with lasered cross on lid. Height: 2", width: 5 1/2", depth: 4", capacity:100 wafers

| Code  | GLT12  |
|-------|--------|
| Price | £85.40 |



## HYMN BOARDS & CROSSES



**HYMN BOARD WITH OAK STAND** (Numbers included) Height: 84"

| Code  | WHBS01  |
|-------|---------|
| Price | £654.49 |



**WOODEN HYMN BOARD** (Numbers included) Width: 26"

| Code  | WHB01   |
|-------|---------|
| Price | £254.95 |



**HYMN BOARD NUMBERS** Pack of 60. Black on white 3¾" x 2¾"

| Code  | HNC01  |
|-------|--------|
| Price | £18.81 |



**HYMN BOARD NUMBERS** Pack of 60. White on black 3¾" x 2¾"

| Code  | HNC02     | HNC03   |
|-------|-----------|---------|
| Price | £18.81    | £34.78  |
| Size  | 3¾" x 2¾" | 6" x 4" |



**BRASS CORPUS**

| Code   | CORPUS01 | CORPUS02 | CORPUS05 | CORPUS07 |
|--------|----------|----------|----------|----------|
| Price  | £11.94   | £16.57   | £28.05   | £77.98   |
| Height | 5"       | 7"       | 12"      | 15"      |



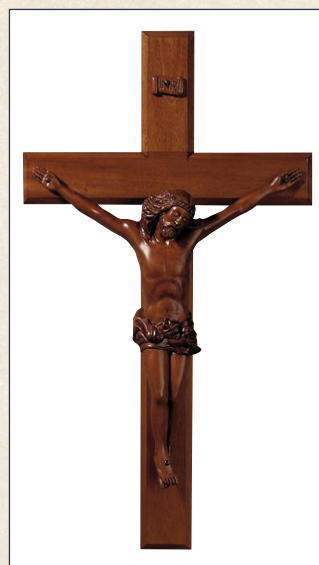
**BRASS CORPUS WITH I.N.R.I.**

| Code   | CORPUS03 | CORPUS04 | CORPUS06 | CORPUS08 |
|--------|----------|----------|----------|----------|
| Price  | £12.82   | £17.42   | £28.94   | £78.85   |
| Height | 5"       | 7"       | 12"      | 15"      |



**STANDING CROSS WITH BRASS CORPUS** Height: 14"

| Code  | WAC01B  |
|-------|---------|
| Price | £201.23 |



**ORNATE MAHOGANY CROSS** with resin Corpus Height: 24"

| Code  | WAC03   |
|-------|---------|
| Price | £130.68 |



**OAK CROSS WITH CORPUS** Height 12" Flush fitting to the wall

| Code  | WAC02   |
|-------|---------|
| Price | £192.04 |

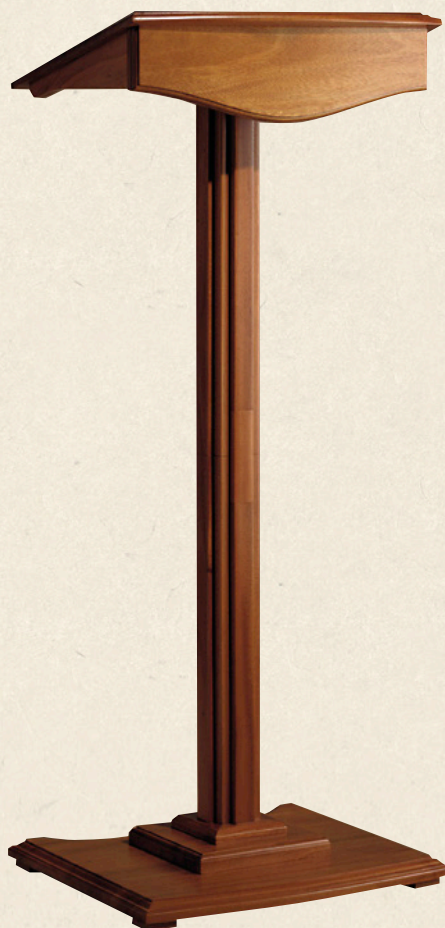


**WAC 01A – STANDING CROSS**, without Corpus Height: 14"

| Code  | WAC01A  |
|-------|---------|
| Price | £146.33 |



## LECTERN & BIBLE STANDS



**WOODEN LECTERN** (Easily Assembled)  
Made from sustainable wood. Height: 44". Width:  
18" Depth: 14"

|       |         |
|-------|---------|
| Code  | LEC01   |
| Price | £305.97 |



**BIBLE STAND STAINED  
MID BROWN** Height: 7"  
Width: 17" Depth: 13"

|       |         |
|-------|---------|
| Code  | WBS01   |
| Price | £256.00 |



**BIBLE STAND STAINED  
ASH** Height: 7" Width: 17"  
Deep: 13"

|       |         |
|-------|---------|
| Code  | WBS01A  |
| Price | £256.00 |



**ROTATING STAINED  
TABLE TOP BIBLE  
STAND** 16" x 12"

|       |         |
|-------|---------|
| Code  | GL6160W |
| Price | £310.82 |



**ROTATING ASH TABLE  
TOP BIBLE STAND**  
16" x 12"

|       |         |
|-------|---------|
| Code  | GL6160A |
| Price | £310.81 |



**ADJUSTABLE STAINED  
WOOD BIBLE STAND**  
11" x 14"

|       |         |
|-------|---------|
| Code  | GL5010  |
| Price | £151.46 |



**FOLDING TABLE TOP  
NATURAL LECTERN**  
68.5cm x 37cm x 37cm

|       |         |
|-------|---------|
| Code  | LEC06N  |
| Price | £282.37 |



**FOLDING TABLE TOP  
MAHOGANY LECTERN**  
68.5cm x 37cm x 37cm

|       |         |
|-------|---------|
| Code  | LEC06   |
| Price | £282.37 |



## ΠΟΠ CONFORMIST COMMUNION



**SIX SIDED, 12"**  
**DIAMETER,** wood/woven  
plate with red felt base, pack  
size 1

|       |        |
|-------|--------|
| Code  | OP01R  |
| Price | £44.96 |



**WOODEN WAFER BOX WITH LASERED  
CROSS ON LID** Holds 100 Wafers. Height 5½" x  
4" Depth x 2" High, pack size 1

|       |        |
|-------|--------|
| Code  | GLT12  |
| Price | £85.46 |



**DARK, NATURAL  
WOOD BREAD PLATE,**  
(Fair trade renewable source).  
Diameter 9", pack size 1

|       |        |
|-------|--------|
| Code  | OBP01  |
| Price | £45.86 |



**SOLID, POLISHED  
WOOD PLATE** with red  
felt base, pack size 1

|       |        |
|-------|--------|
| Code  | OP02R  |
| Price | £64.80 |



**PORTABLE  
COMMUNION SET**  
consisting of 6 glasses,  
glass wine bottle, solid  
brass bread holder  
with screw top, hard  
wood case with red or  
blue velvet lining and  
matching storage bag.  
Pack size 1

|        |         |         |
|--------|---------|---------|
| Code   | GLT09R  | GLT09B  |
| Price  | £258.47 | £258.47 |
| Lining | Red     | Blue    |

## FLOWER & PASCHAL STANDS



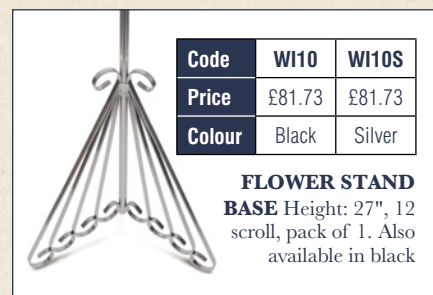
**FLOWER STAND TOP** brick  
oasis flower holder 9" x 4½",  
Height: 21",  
pack of 1

|       |        |
|-------|--------|
| Code  | WI06   |
| Price | £32.17 |



**ROUND OASIS FLOWER HOLDER**  
Diameter: 9" Height 21", pack of 1

|       |        |
|-------|--------|
| Code  | WI07   |
| Price | £39.73 |



|        |        |        |
|--------|--------|--------|
| Code   | WI10   | WI10S  |
| Price  | £81.73 | £81.73 |
| Colour | Black  | Silver |

**FLOWER STAND  
BASE** Height: 27", 12  
scroll, pack of 1. Also  
available in black



**FLOWER STAND  
BASE** Height: 27", 6  
scroll, pack of 1

|       |        |
|-------|--------|
| Code  | WI09   |
| Price | £57.34 |



**WROUGHT  
IRON STAND,**  
2" paschal candle  
top. Height: 21",  
pack of 1

|       |        |
|-------|--------|
| Code  | WI19B  |
| Price | £58.36 |



**ROUND, FLAT,  
LIPPED TOP** Height: 21"  
pack of 1. Multiple widths  
shown below, available in  
black and silver.

|        |        |        |        |        |        |        |
|--------|--------|--------|--------|--------|--------|--------|
| Code   | WI08   | WI07A  | WI07AS | WI19   | WI19S  | WI19A  |
| Price  | £39.48 | £43.37 | £43.37 | £58.38 | £58.38 | £71.24 |
| Colour | Black  | Black  | Silver | Black  | Silver | Black  |
| Width  | 8½"    | 12"    | 12"    | 15"    | 15"    | 17½"   |



## VOTIVE CANDLE STANDS



|       |         |
|-------|---------|
| Code  | W11     |
| Price | £770.77 |

### ROUND 2 TIER VOTIVE STAND

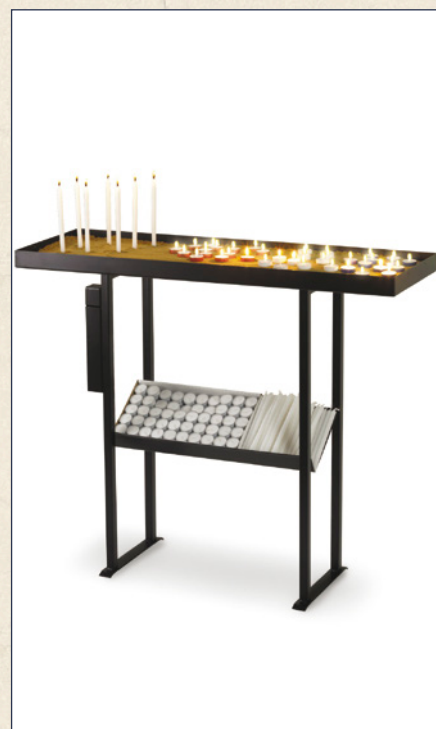
Colour black. Fitted with either pans or prickets for 24 lights or 24 traditional candles. Height approx: 50" Diameter approx: 18"



|       |         |
|-------|---------|
| Code  | W12     |
| Price | £570.43 |

### OBLONG 3 TIER VOTIVE STAND

fitted with either pans or prickets for 30 lights or 30 traditional votive candles. Height: 36" Width: 24 1/2" Depth: 12"



|       |         |
|-------|---------|
| Code  | W122    |
| Price | £570.43 |

### OBLONG SAND TRAY VOTIVE STAND

**BLACK** Height: 37" Width: 44", Depth: 15"



For use with product VC12T, 12" self extinguishing tapers

|       |         |
|-------|---------|
| Code  | W14     |
| Price | £570.43 |

### OBLONG STAND WITH SPIKES

Height: 36" Width: 31" Depth: 31" for use with 12" x 1/2" candles



|       |         |
|-------|---------|
| Code  | GD3860  |
| Price | £871.20 |

### ROUND CERAMIC SAND TRAY

mounted on a bronze coloured base. Height 28", width 20"



|       |         |
|-------|---------|
| Code  | GD2100  |
| Price | £880.70 |

### BLACK STAND WITH MONEY BOX

for 50 candles. Height 36", width 43"



In line with current diocesan advice votive stand candle dividers (77cm long and 5.5cm wide holding 12 candles) are available for use with shelf style votive stands. They are not required with Charles Farris products. **W169 Metal Candle Divider** is available on our website.





|              |                |
|--------------|----------------|
| <b>Code</b>  | <b>GD9702</b>  |
| <b>Price</b> | <b>£735.29</b> |

**MODERN ROUND VOTIVE STAND** for 43 lights, Height: 41" Width: 23".



|              |                |
|--------------|----------------|
| <b>Code</b>  | <b>W115</b>    |
| <b>Price</b> | <b>£724.38</b> |

**OBLONG 7 DAY LIGHT STAND** Holds 40 7 day lights. Height 41", width 31", depth 16"



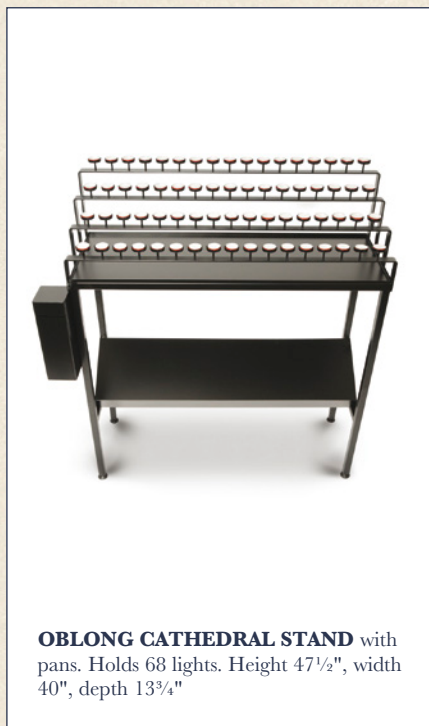
|              |                |
|--------------|----------------|
| <b>Code</b>  | <b>GD9707</b>  |
| <b>Price</b> | <b>£772.36</b> |

**CORNER VOTIVE STAND** Holds 45 lights. Height 45", width at front 36"



|              |                |
|--------------|----------------|
| <b>Code</b>  | <b>GD3653</b>  |
| <b>Price</b> | <b>£726.00</b> |

**TREE STYLE VOTIVE STAND IN A BRONZE FINISH** Holds 42 lights. Height 57", width 22"



**OBLONG CATHEDRAL STAND** with pans. Holds 68 lights. Height 47½", width 40", depth 13¾"

|              |                |
|--------------|----------------|
| <b>Code</b>  | <b>W168</b>    |
| <b>Price</b> | <b>£917.40</b> |



**VOTUM GLASS OIL CANDLES** for a permanent light on your pan votive stand. Approx. 8hrs per fill. Replaces matches or lighter.

|              |               |               |               |
|--------------|---------------|---------------|---------------|
| <b>Code</b>  | <b>OVGB</b>   | <b>OVGR</b>   | <b>OVGC</b>   |
| <b>Price</b> | <b>£38.31</b> | <b>£38.31</b> | <b>£38.31</b> |

Please note that all votive stands are for sale or available on permanent free loan when you use Charles Farris votive candles with this product – contact Charles Farris Customer Service for details



More candle holders featured in the brass, silver & wood sections



**SPIKED  
SAUCER  
HOLDER**  
black. Diameter:  
4<sup>1</sup>/<sub>2</sub>", pack of 1

|       |       |
|-------|-------|
| Code  | WI01  |
| Price | £7.56 |



**CANDLE  
HOLDER**  
Suitable for 1"  
candles, Base:  
3<sup>3</sup>/<sub>4</sub>", pack of 1

|       |       |
|-------|-------|
| Code  | WI02  |
| Price | £5.95 |



**CANDLE  
HOLDER** for 3"  
diameter candles,  
Height: 3", Base  
diameter: 6",  
pack of 1

|       |        |
|-------|--------|
| Code  | WI03   |
| Price | £22.97 |



**ABBEY  
HOLDER** for  
2" – 3" candles  
Height: 5<sup>1</sup>/<sub>2</sub>" Base:  
6", pack of 1

|       |        |
|-------|--------|
| Code  | WI04   |
| Price | £16.72 |



**GOthic  
HOLDER**  
Suitable for 2"  
candles, pack  
of 1

|       |        |
|-------|--------|
| Code  | WI05   |
| Price | £12.12 |



**6" DIAMETER  
HOLDER** black.  
Diameter: 6",  
suitable for 2"  
candles,  
pack of 1

|       |        |
|-------|--------|
| Code  | WI17   |
| Price | £16.89 |



**CANDLE  
HOLDER  
LIPPED** for 2"  
diameter candles,  
Height: 3", Base  
diameter: 4<sup>1</sup>/<sub>2</sub>",  
pack of 1

|       |       |
|-------|-------|
| Code  | WI17A |
| Price | £7.82 |



**SPIKED  
SAUCER  
HOLDER**  
black.  
Diameter: 8",  
pack of 1

|       |        |
|-------|--------|
| Code  | WI18   |
| Price | £15.81 |





CHARLES FARRIS  
CHANDLERS 1845  
LONDON

CHASUBLES  
DALMATICS  
CLERICAL SHIRTS  
ALBS & COTTAS  
GIRDLES & STOLES  
VESTMENT ACCESSORIES

The success of our vestment restoration has led us to offer various new items. Enquiries are welcome for any Vestment, Altar Cloth, Frontal or Linen requirements. We are happy for you to receive the item for approval before purchase. Please contact your local manager for further details



VESTMENTS



## CHASUBLES



**CHASUBLE/STOLE** Celtic Cross design on front and reverse

| Code   | CEL1085      | CEL1026 | CEL1062       | CEL1037 | CEL1019 |
|--------|--------------|---------|---------------|---------|---------|
| Price  | £157.64      | £157.64 | £157.64       | £157.64 | £157.64 |
| Colour | Roman purple | Red     | Emerald Green | Cream   | White   |



**CHASUBLE/STOLE** PX design on front and reverse

| Code   | PX1085       | PX1026  | PX1062        | PX1037  | PX1019  |
|--------|--------------|---------|---------------|---------|---------|
| Price  | £157.64      | £157.64 | £157.64       | £157.64 | £157.64 |
| Colour | Roman purple | Red     | Emerald Green | Cream   | White   |



**BLACK CLERICAL SHIRT SHORT SLEEVE** Codes relate to collar size ie. SS15BK is 15" collar

| Code  | SS15BK | SS15.5BK | SS16BK | SS16.5BK | SS17BK | SS17.5BK | SS18BK |
|-------|--------|----------|--------|----------|--------|----------|--------|
| Price | £32.05 | £32.05   | £32.05 | £32.05   | £32.05 | £32.05   | £32.05 |

**BLACK CLERICAL SHIRT LONG SLEEVE** Codes relate to collar size ie. LS15.5BK is 15½" collar

| Code  | LS15BK | LS15.5BK | LS16BK | LS16.5BK | LS17BK | LS17.5BK | LS18BK |
|-------|--------|----------|--------|----------|--------|----------|--------|
| Price | £32.05 | £32.05   | £32.05 | £32.05   | £32.05 | £32.05   | £32.05 |



**BLACK POLO SHIRT WITH PRIESTS COLLAR**

| Code  | PSLBK  | PSXLBK      | PSXXLBK  |
|-------|--------|-------------|----------|
| Price | £21.43 | £21.43      | £21.43   |
| Size  | Large  | Extra large | XX Large |



## DALMATICS



DALMATICS Celt design

| Code   | DCEL1085     | DCEL1026 | DCEL1062      | DCEL1037 | DCEL1019 |
|--------|--------------|----------|---------------|----------|----------|
| Price  | £157.64      | £157.64  | £157.64       | £157.64  | £157.64  |
| Colour | Roman purple | Red      | Emerald Green | Cream    | White    |



DALMATICS PX design

| Code   | DPX1085      | DPX1026 | DPX1062       | DPX1037 | DPX1019 |
|--------|--------------|---------|---------------|---------|---------|
| Price  | £157.64      | £157.64 | £157.64       | £157.64 | £157.64 |
| Colour | Roman purple | Red     | Emerald Green | Cream   | White   |



MID GREY CLERICAL SHIRT SHORT SLEEVE

| Code   | SS16.5MG | SS17MG | SS17.5MG |
|--------|----------|--------|----------|
| Price  | £32.05   | £32.05 | £32.05   |
| Collar | 16.5"    | 17"    | 17.5"    |



MID GREY CLERICAL SHIRT LONG SLEEVE

| Code   | LS16.5MG | LS17MG | LS17.5MG |
|--------|----------|--------|----------|
| Price  | £32.05   | £32.05 | £32.05   |
| Collar | 16.5"    | 17"    | 17.5"    |

WHITE PRIESTS CLERICAL COLLAR  
pack size 4



| Code  | WCC01 |
|-------|-------|
| Price | £7.86 |



SILK HOME  
COMMUNION  
STOLE Purple/white  
and gold cross design  
Length: 48", width: 2"

| Code  | HCS01   |
|-------|---------|
| Price | £129.89 |



## ALBS, COTTAS, GIRDLES, STOLES & ACCESSORIES

**VESTMENT COVER**  
black with window.  
Size: 61" x 25"

|       |             |
|-------|-------------|
| Code  | VESTCOVER01 |
| Price | £15.80      |



**COPE HANGER**



|       |        |
|-------|--------|
| Code  | WCH    |
| Price | £44.34 |



**WOODEN VESTMENT AND STOLE HANGER** Specially designed to save wear on shoulders, 24" wide

|       |        |        |
|-------|--------|--------|
| Code  | WVH    | WVHL   |
| Price | £28.89 | £28.89 |
| Logo  | No     | Yes    |

**READER'S SCARF** black polyester.  
Length approximately 100", width 6½, 3" at neck.



|       |        |
|-------|--------|
| Code  | VSCA01 |
| Price | £56.09 |

**READER'S SCARF** in polyester or silk. Length approximately 100", width 6½, 3" at neck

|       |           |         |
|-------|-----------|---------|
| Code  | VSCA02    | VSCS03  |
| Price | £66.90    | £157.61 |
| Type  | Polyester | Silk    |



### 12FT RAYON VESTMENT GIRDLES

|        |         |        |        |        |         |         |        |
|--------|---------|--------|--------|--------|---------|---------|--------|
| Code   | GIR01GD | GIR01R | GIR01G | GIR01P | GIR01BK | GIR01BL | GIR01  |
| Price  | £49.45  | £49.45 | £49.45 | £49.45 | £49.45  | £49.45  | £49.45 |
| Colour | Gold    | Red    | Green  | Purple | Black   | Blue    | White  |

**PLAIN WHITE COTTA**



|       |        |        |
|-------|--------|--------|
| Code  | PCT30  | PCT32  |
| Price | £80.47 | £80.47 |
| Type  | 30"    | 32"    |

**WHITE ALB** with hidden shoulder zip



|        |         |         |         |         |
|--------|---------|---------|---------|---------|
| Code   | DBA52   | DBA54   | DBA60   | DBA62   |
| Price  | £118.08 | £118.08 | £118.08 | £118.08 |
| Length | 52"     | 54"     | 60"     | 62"     |

**ALB IN POLYESTER**  
with cowl neck or hood



|       |         |
|-------|---------|
| Code  | VSG02   |
| Price | £235.74 |

**LEATHER COLLECTION BAG** with metal handles and locks



|       |         |         |
|-------|---------|---------|
| Code  | CBL01RL | CBL01BL |
| Price | £79.13  | £79.13  |
| Cross | Red     | Blue    |



**COLLECTION BAG** with a gold cross design. Depth: 10"

|       |        |        |        |
|-------|--------|--------|--------|
| Code  | CB02   | CB02G  | CB02P  |
| Price | £83.00 | £83.00 | £83.00 |
| Cross | White  | Green  | Purple |



**RED COLLECTION BAG** with robust wooden handles. Depth: 11" Width including handles: 14"

|       |        |        |
|-------|--------|--------|
| Code  | CB01R  | CB01B  |
| Price | £64.04 | £64.04 |
| Cross | Red    | Blue   |





CHARLES FARRIS  
CHANDLERS 1845  
LONDON

SPECIAL PROJECTS  
RESTORATION  
RESTORATION EXAMPLES



SPECIAL PROJECTS & RESTORATION



## SPECIAL PROJECTS

Special projects encompasses the personalising of candles, both pillar and plastic cased, to reflect fund raising or the commemoration of events. Featured here are some examples of recent customer requirements generated from a good quality image and applied to the candle. Please contact customer service or your area manager for more details and costs.



The size of the Charles Farris Ltd wooden statues featured, can be adjusted to meet your specific requirements. Items shown are made from fully sustainable wood.

For a number of years Charles Farris has undertaken restoration projects for cathedrals, abbeys and churches of silverware, brassware, altar frontals, vestments, woodware, pews and glassware. The service now also includes the hand cleaning & repair of banners, vestments and altar frontals. Our expert staff would be pleased to advise on any requirement from a simple repair to a more complex restoration. We will arrange a fully insured collection and return.



BEFORE



AFTER



BEFORE



AFTER





# TERMS AND CONDITIONS

All orders are subject to these terms and conditions of sale. Please read them carefully.

## 1 GENERAL

- 1.1 The definitions used in the Conditions are set out in Condition 16.
- 1.2 The Conditions apply to all contracts entered into by the Seller whether entered into via this website or otherwise. No modification or variation of any of the Conditions shall be binding unless executed in writing by the parties.
- 1.3 The Conditions contain the entire terms and conditions of the contract between the Seller and you and (subject to any rule of law incapable of being over-ridden) operate to displace any rule of law and terms and conditions imposed or sought to be imposed by you which might otherwise apply.

## 2 SALES

- 2.1 If the Company does not send you written notice that your order has been rejected within 2 Working Days of your order, then the Company shall be deemed to have accepted your order. The Seller's right is reserved (without prejudice to any other remedy) to reject any order. For the avoidance of doubt, by placing an order, you are agreeing that such order is subject to the Conditions.
- 2.2 If goods are to be personalised by the Seller in accordance with a specification or specific request submitted by you, you shall indemnify the Seller against all loss, damages, costs and expenses awarded against or incurred by the Seller in connection with or paid or agreed to be paid by the Seller arising from any claim for infringement of any patent, copyright, design, trade mark or other intellectual property rights of any other person which results directly or indirectly from the Seller's use of your specification.
- 2.3 The Seller reserves the right to make any changes in the specification of goods which are required to conform with any applicable statutory or EC requirements.

## 3 PURCHASE PRICE AND PAYMENT

- 3.1 Where you are a Designated Account Holder, payment in full for goods shall be made to the Seller strictly within thirty days of the date of the Seller's invoice. If you are not a Designated Account Holder, then payment in full for goods must be made at the time of placing your order. The Seller shall charge interest on overdue payments at the rate of eight per cent per annum above the base lending rate for the time being of the Bank of Scotland Plc.
- 3.2 The prices set out on the Seller's website are inclusive of any value added tax and other applicable sales taxes. You shall be additionally liable to pay such taxes to the Seller.
- 3.3 The prices set out on the Seller's website are exclusive of handling and carriage charges. You shall be additionally liable to pay the Seller the following charges to cover handling and carriage:  
Mainland UK carriage is calculated at weight and will be clear at point of checkout.  
Postcodes P030 – P041 (I.O.W) £6.60 + VAT (£7.92) and postcodes IV,HS,KA27-28,KW,PA20-49,PA60-78,PH17-26,PH30-44 and ZE (North of Scotland) £12 surcharge + vat (£14.40) on all orders  
Offshore Islands ie Scilly Isles I.O.M and Northern Ireland there is a £15 + vat (£18) surcharge on all orders.  
Channel Islands and Overseas carriage cost on application  
The handling and carriage charge will be waived in respect of all deliveries, where the net price of the goods to be delivered (excluding VAT and other sales tax) exceeds £130. Overseas deliveries are still subject to a delivery charge which will be given upon application.
- 3.4 If you fail to make any payment on the due date then, without prejudice to any other right or remedy available to the Seller, the Seller shall be entitled to cancel the contract, suspend any further deliveries and withdraw credit facilities to you.
- 3.5 All payments must be made by you in pounds sterling.

## 4 DELIVERY

- 4.1 Delivery is usually within 7 Working Days from receipt by the Seller of your order. Please advise us if such goods have not been received within 21 Working Days from the date of ordering. Despatch can occasionally be delayed, particularly prior to Christmas and Easter, when goods are being made to order, or when popularity depletes stocks of some items. Goods required urgently should be notified at the time of ordering.
- 4.2 Whilst delivery dates are given by the Seller in good faith based upon information available to the Seller, such dates are not guaranteed and the Seller accepts no liability for delay in delivery howsoever caused and no delay of 30 days or less from the date of your order shall entitle you to reject any such delivery or any further instalments or part of the order or to repudiate the contract or the order or any part thereof or to claim any damages or compensation in respect of any such delay.
- 4.3 Any shortage of delivery or faulty goods must be notified to the Seller in writing within 7 Working Days of delivery of the goods.
- 4.4 If the Seller fails to deliver the goods for any reason other than any cause beyond the Seller's reasonable control or your default, and the Seller is accordingly liable to you, the Seller's liability shall be limited to the excess (if any) of the cost to you (in the cheapest available market) of similar goods to replace those not delivered over the price of the goods.
- 4.5 You have the right to return the goods within 7 Working Days from the date of delivery by giving us notice of your wish to do so. If you decide to return the goods, then you do so at your own expense [(unless the goods delivered were substitutes for the goods which you ordered)] and it shall be your responsibility to ensure that the goods are received by the Seller and are not damaged in transit. The Seller will refund the price of the goods to you within 30 days of receipt by the Seller of your notice that you wish to return the goods provided the goods have been returned to the Seller. Accordingly, you must retain possession of the goods and take reasonable care of them whilst they are in your possession, in any event for seven Working Days from delivery and, if you give us notice that you wish to return the goods, until you deliver the goods to the Seller. This right does not apply if the goods were made or personalised to your specification.

## 5 RISK OF LOSS

- 5.1 The risk of loss or damage to goods shall pass to you when the goods are released by the Seller from its premises to you or to any carrier authorised by the Seller or by you to collect the goods.
- 5.2 You shall be responsible for all costs of insurance of the goods from the time that risk of loss passes to you.

## 6 UNFORESEEN DELAY

Neither party shall be responsible for any losses resulting if the fulfilment of any term of the contract is delayed or prevented by any cause beyond its reasonable control.

## 7 LOCAL TAXES

In case any tax or duty (including but not limited to import duty, VAT or other sales tax) should be imposed or collected under the laws of the country of you or any governmental unit thereof, whether now in existence or hereafter enacted, with respect to the goods or the manufacture, purchase, sale or use thereof which shall increase the cost to the Seller, then, and in every such event, the Seller shall have the right to increase the price of the goods to the extent necessary to meet such increased cost and the amount of any such tax may be included in the invoice for the goods or services to be provided under the contract or may be invoiced at a later date. For the avoidance of doubt you shall be responsible and liable for all import duties, VAT or other sales tax charged or levied on all goods ordered by you and sold to you by the Seller.

## 8 WARRANTIES AND LIABILITY

- 8.1 Subject to the conditions set out below the Seller warrants that the Goods will correspond with their specification at the time of delivery and will be free from all material defects in material and workmanship for a period of one month from delivery.
- 8.2 The above warranty is given by the Seller subject to the following conditions:
  - 8.2.1 the Seller shall be under no liability in respect of any defect in the goods arising from any drawing, design or specification supplied by you;
  - 8.2.2 the Seller shall be under no liability in respect of any defect arising from fair wear and tear, wilful

- damage, negligence, abnormal working conditions, failure to follow the Seller's instructions (whether oral or in writing), misuse or alteration or repair of the goods without the Seller's approval;
- 8.2.3 the Seller shall be under no liability under the above warranty (or any other warranty, condition or guarantee) if the total price for the goods has not been paid.
- 8.3 Your statutory rights are not affected by the Conditions.
- 8.4 Any claim by you which is based on any defect in the quality or condition of the goods or their failure to correspond with a particular specification shall (whether or not delivery is refused by you) be notified to the Seller within 7 Working Days from the date of delivery or (where the defect or failure was not apparent on reasonable inspection) within a reasonable time not exceeding [one month] after discovery of the defect or failure. If delivery is not refused, and you do not notify the Seller accordingly within 7 Working Days of the date of delivery or such reasonable time, you shall not be entitled to reject the goods.
- 8.5 Where a valid claim in respect of goods based on any defect in their quality or condition or their failure to meet a particular specification is notified to the Seller in accordance with the Conditions, the Seller shall be entitled to replace the goods (or the part in question) free of charge or, at the Seller's sole discretion, refund to you the price of the goods (or a proportionate part thereof), but shall have no further liability to you.
- 8.6 Except in respect of death or personal injury caused by the Seller's negligence, the Seller shall not be liable to you by reason of any representation (unless fraudulent) or any implied warranty, condition or other term, or any duty at common law, or under the express terms of the contract, for any special or consequential loss or damage (whether for loss of profit, goodwill, turnover or otherwise), costs, expenses or other claims for compensation whatsoever (and whether caused by the negligence of the Seller, its employees or agents or otherwise) which arise directly or indirectly out of or in connection with the supply of the goods or their use by you, and the entire liability of the Seller under or in connection with the contract shall not exceed the price of the goods supplied pursuant to the contract except as expressly provided in the Conditions.
- 8.7 The Seller shall be under no liability in respect of any defect in the goods arising from any specification supplied by you.

## 9 RETENTION OF TITLE

The property in any goods shall pass to you when, and shall not pass to you until, the Seller has been paid for them in full together with the full price due to the Seller for any other goods the subject of any other contract between the Seller and you.

## 10 YOUR USE OF THE GOODS

You shall be responsible for and agree to instruct users of the goods sold to you on the safe and proper use of the goods and you shall ensure that where goods are accompanied by an instruction leaflet that all persons using the goods shall read such instruction leaflet. It is understood and agreed that failure by you to conform with these requirements obviates any responsibility on the Seller for safety and you agree to indemnify and keep the Seller harmless from and against any liability, damages, costs and expenses, including reasonable legal fees and expenses, which may be incurred by the Seller as a result of your failure to comply with the requirements of this Condition.

## 11 INSOLVENCY OF BUYER

- 11.1 This Condition applies if:
  - 11.1.1 you make any voluntary arrangement with your creditors or (being an individual or firm) become bankrupt or (being a company) become subject to an administration order or go into liquidation (otherwise than for the purposes of amalgamation or reconstruction); or
  - 11.1.2 an encumbrancer takes possession, or a receiver is appointed, of any of your property or assets; or
  - 11.1.3 you cease, or threaten to cease, to carry on business; or
  - 11.1.4 the Seller reasonably apprehends that any of the events mentioned above is about to occur in relation to you and notifies you accordingly.
- 11.2 If this Condition applies then, without prejudice to any other right or remedy available to the Seller, the Seller shall be entitled to cancel the contract or suspend any further deliveries under the contract without any liability to you, and if the goods have been delivered but not paid for the price shall become immediately due and payable notwithstanding any previous agreement or arrangements to the contrary.

## 12 SELLER'S REMEDIES

In addition to the rights and remedies contained in the Conditions, the Seller shall have all the rights and remedies afforded to a Seller pursuant to any rule of law. All rights and remedies of the Seller under the Conditions shall be cumulative and not in the alternative.

## 13 ASSIGNMENT AND THIRD PARTY RIGHTS

- 13.1 The contract and the rights granted under the Conditions shall not be assigned by you without the prior written consent of the Seller. Any assignment or purported assignment by you shall be wholly void and ineffective for all purposes unless made in conformity with this Condition. The Conditions shall be binding upon and shall inure for the benefit of the parties and their respective successors and permitted assigns.
- 13.2 Notwithstanding anything to the contrary in these Conditions, nothing in these Conditions or the contract shall confer on any third party any rights or benefits as against the Seller.

## 14 WAIVER

- 14.1 Failure by the Seller or by you at any time to require performance of any provision of the contract shall not affect the rights of the Seller or you to enforce such provision at a later time.
- 14.2 No waiver by the Seller or you of any Condition or the breach of any term, covenant, representation, or warranty contained in the contract (whether express or given by conduct or otherwise) in any instance shall be a further or continuing waiver of any Condition or breach or a waiver of any other Condition or deemed to be or construed as a breach of any other term, covenant, representation or warranty in the contract.

## 15 CONSTRUCTION

The contract and the Conditions shall be governed by and construed according to English Law and the Courts of England and Wales shall have exclusive jurisdiction. The invalidity or unenforceability of any particular Condition or any other term of the contract shall not affect the other provisions and the contract shall be construed in all respects as if such invalid or unenforceable provisions were omitted.

## 16 DEFINITIONS

- 16.1 In the context of these Standard Terms and Conditions of Sale:
  - 16.1.1 'the Seller' means Charles Farris Limited of Quarry Fields, Mere, Wiltshire BA12 6LA and includes the Seller's duly appointed representatives or agents;
  - 16.1.2 'you' means anyone who places an order to buy goods from the Seller;
  - 16.1.3 'contract' means a contract for the sale of goods by the Seller;
  - 16.1.4 'goods' means all and any goods, materials or products of whatsoever description, supplied, sold or distributed by the Seller;
  - 16.1.5 'Conditions' means these terms and conditions and any of them;
  - 16.1.6 'Working Day' means any day on which the clearing banks in the City of London are open for business;
  - 16.1.7 'Designated Account Holder' means a customer of the Seller who has been designated in writing as such;
  - 16.1.8 The singular shall include the plural and vice versa and each of the male, female and neutral pronouns shall be interchangeable;
  - 16.1.9 Headings are for convenience only and do not affect the construction or interpretation of the Conditions;
  - 16.1.10 Reference to any rule of law includes common law, statute or statutory regulations, applicable laws of the European Union and the decisions of any court of competent jurisdiction;
  - 16.1.11 Reference to any statute includes any re-enactment or modification of such statute.





BY APPOINTMENT  
TO HER MAJESTY THE QUEEN  
CHANDLERS CHARLES FARRIS LTD  
LONDON

# CHARLES FARRIS

CHANDLERS 1845  
LONDON



[www.charlesfarris.co.uk](http://www.charlesfarris.co.uk)

**T: 01747 861839**

Charles Farris Limited, Quarry Fields, Mere, Wiltshire BA12 6LA  
[sales@charlesfarris.co.uk](mailto:sales@charlesfarris.co.uk)